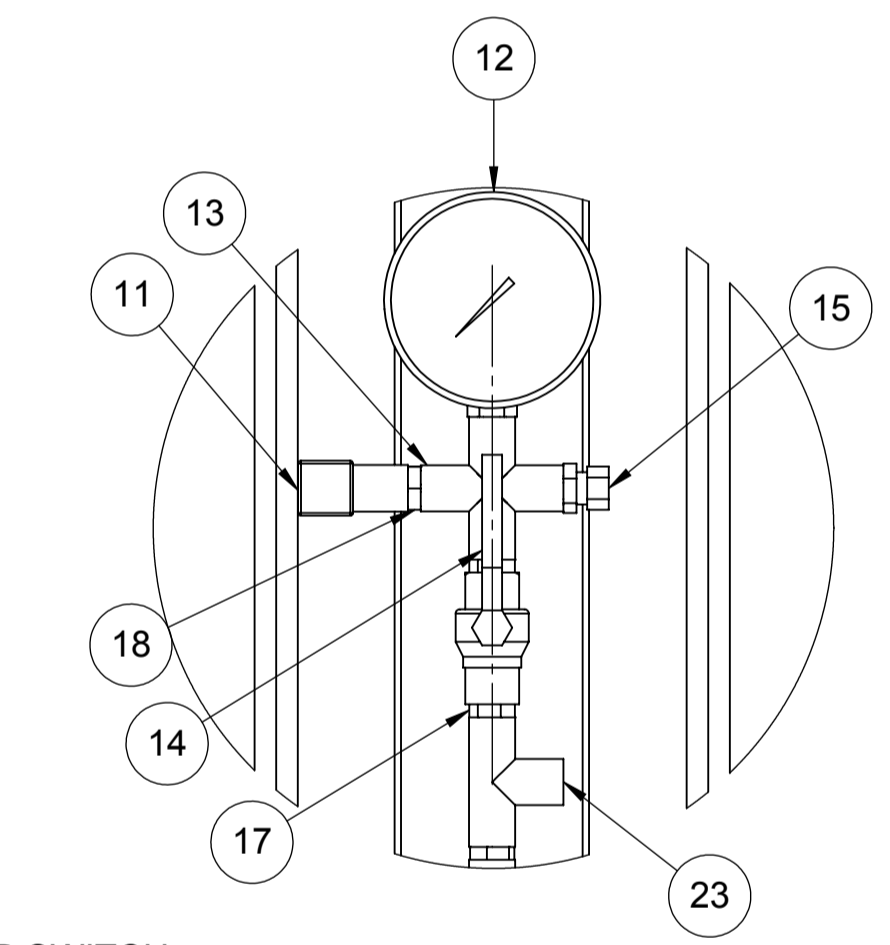
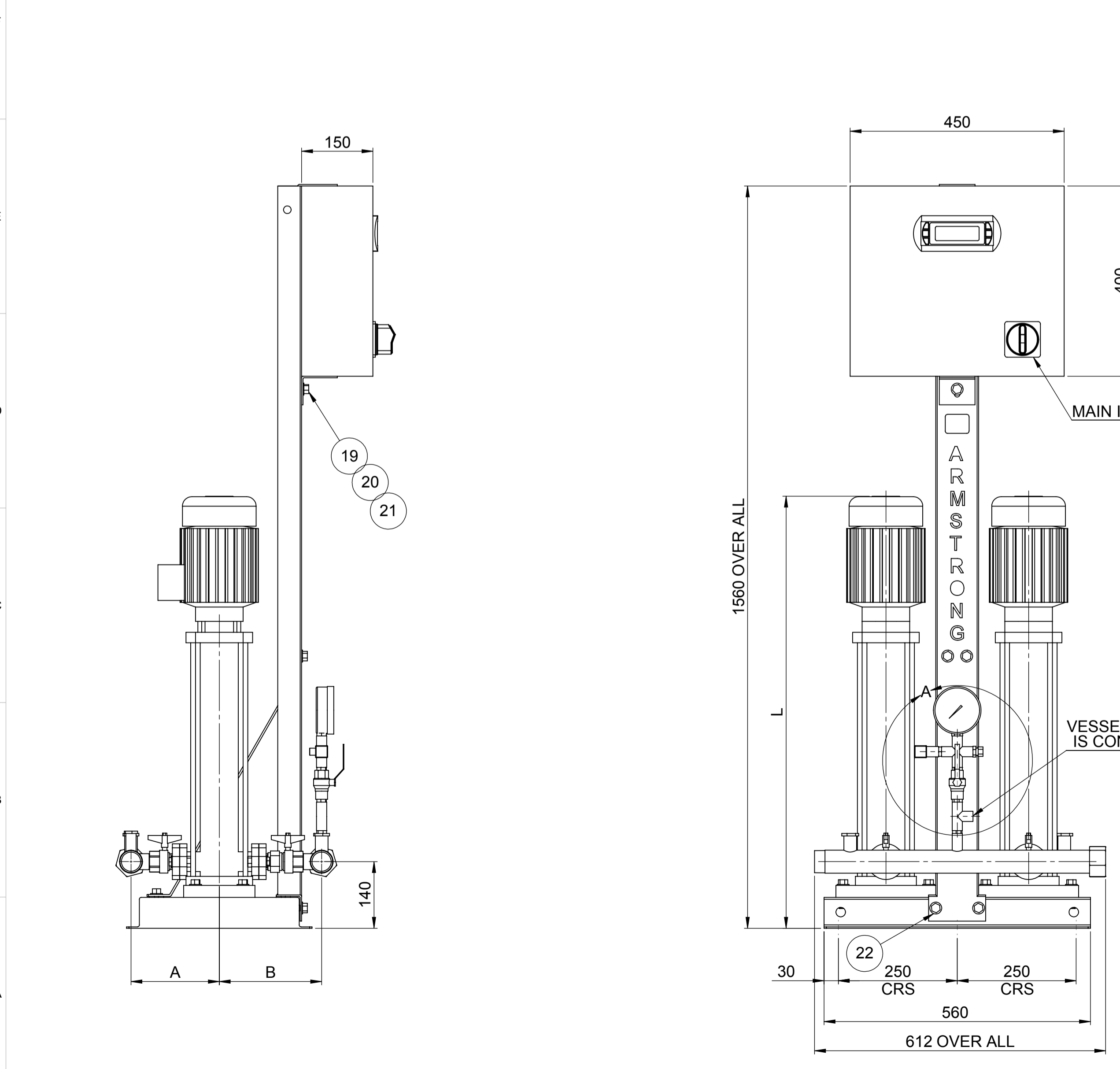
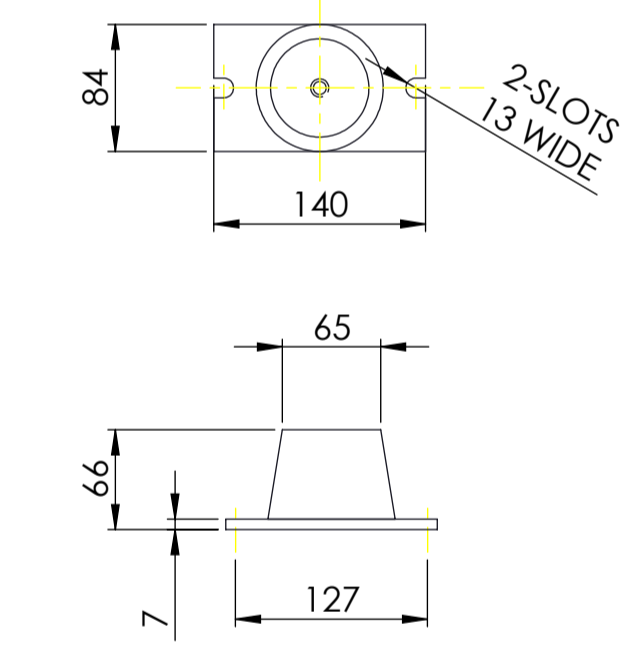


PUMP SIZE	MOTOR KW	FLC AMPS 3x415W	PUMP WEIGHT KGS	SET WEIGHT KGS	VESSEL SIZE LTRS	WORKING PRESSURE MAX BAR	TEST PRESSURE MAX BAR	STARTING CURRENT	L MM	A MM	B MM
SV0202	0.55	1.5	17.5	78	60	2.2	24	4	559	186	216
SV0203	0.55	1.5	18	79	60	3.1	24	4	584	186	216
SV0204	0.55	1.5	19	81	60	4.2	24	4	621	186	216
SV0205	0.55	1.5	21.5	86	60	5.3	24	4	661	186	216
SV0206	0.75	1.9	22	87	60	6.3	24	6	686	186	216
SV0207	0.75	1.9	23	89	60	7.4	24	6	748	186	216
SV0208	1.1	2.6	23.5	90	60	8.4	24	6	773	186	216
SV0209	1.1	2.6	24	91	60	9.4	24	6	798	186	216
SV0211	1.1	2.6	31	105	60	11.5	24	6	858	186	216
SV0212	1.5	3.6	31.5	106	60	12.6	24	6	883	186	216

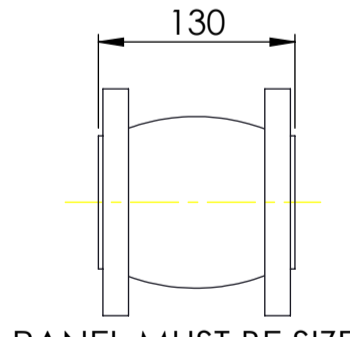


DETAIL A SCALE 2 : 7

ANTI-VIBRATION MOUNTINGS OPTIONAL ONLY SUPPLIED WHEN ORDERED (4-PER SET K2092/10)



FLEXIBLE CONNECTORS OPTIONAL ONLY SUPPLIED WHEN ORDERED (2-PER SHEET)



NOTE:-

- 1) MAIN POWER SUPPLY TO PANEL MUST BE SIZED TO COVER ALL PUMPS RUNNING AT THE SAME TIME
- 2) LARGE STORAGE VESSELS, IF ORDERED, WILL BE SUPPLIED LOOSE FOR POSITIONING FOR CLIENT TO SUIT THE AVAILABLE FLOOR SPACE. CLIENT IS TO PROVIDE A CONNECTION FROM THE VESSEL TO THE DELIVERY PIPEWORK ADJACENT TO THE SET ISOLATING AND DRAIN VALVES SHOULD BE FITTED IN THIS CONNECTION
- 3) 60 Lt TANK WILL BE SUPPLIED LOOSE AND SHOULD BE ASSEMBLED ON SITE
- 4) FLANGES ARE AVAILABLE BOTH IN 16 & 25 BAR VERSION
- 5) FOR STANCHION SELECTION USE DRAWING NO. PK14967

ITEM NO	DESCRIPTION	NO. OFF
1	BASE PLATE	1
2	BOLT - M12	8
3	WASHER - M12	8
4	CAGE NUT - M12	8
5	VMS PUMP	2
6	SUCTION/DISCHARGE MANIFOLD ASSY	2
7	ISOLATING VALVE 1"	4
8	NRV 1"	2
9	SUPPORT RIB	1
10	STANCHION	1
11	PRESSURE TRANSDUCER	1
12	PRESSURE GAUGE	1
13	FEMALE CROSS 1/2"	1
14	ISOLATING VALVE 1/2"	1
15	AIR VENT 1/4"	1
16	CONTROL PANEL	1
17	1/2" NIPPLE	3
18	1/2" x 1/4" REDUCING BUSH	3
19	BOLT - M10	9
20	WASHER - M10	9
21	NUT - M10	3
22	CAGE NUT - M10	6
23	1/2" T	1
24	END CAP	2

LAST MODIFICATION DETAILS				PROPRIETARY AND CONFIDENTIAL				UNLESS OTHERWISE SPECIFIED: DIMENSIONS ARE IN MM WELD SYMBOLS TO BS 499 SURFACE FINISH SHOWN IN U.N. MACHINE WHERE SHOWN TO TOLERANCE ± 0.3		NAME: PRAKASH DATE: 01/03/08		ARMSTRONG			
REV:	DATE:	DRN BY:	CHECKED BY:	APP. BY:	THIS DRAWING IS THE PRIVATE AND CONFIDENTIAL PROPERTY OF ARMSTRONG. ALL COPYRIGHT, MANUFACTURING AND SALES RIGHTS RESERVED.	FILE NAME	FINISH	MATERIAL SPEC: BS 308	Q.A. MFG APPR. ENG APPR. COMMENTS:	TITLE: 6800 HMP SERIES 2PUMP SV02		SIZE: A1	DRG. NO. PX10732	REV B	
DRAWING RELEASE LEVEL:								DO NOT SCALE		SCALE: 1:7		WEIGHT: KG		SHEET 1 OF 1	