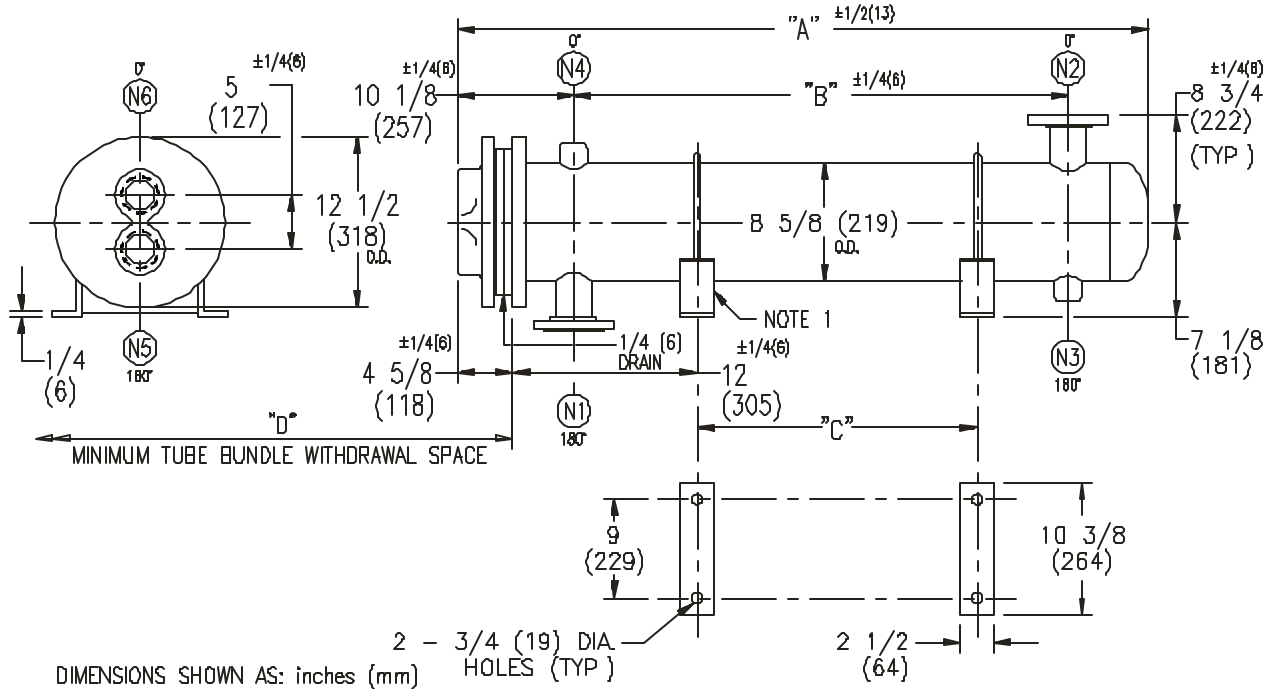


ARMSTRONG®



DIMENSIONS SHOWN AS: inches (mm)

| EXCHANGER SIZE * - BAFFLE SPACING | DIMENSIONS | | | | | | | | | | | |
|--------------------------------------|------------|------|--------|------|--------|------|--------|------|--------|-----|--------|-----|
| | A | | B | | C | | D | | N1 | | N2 | |
| | inches | mm | inches | mm | inches | mm | inches | mm | inches | mm | inches | mm |
| WX-82-2*-1 | 30 3/8 | 772 | 14 | 356 | 3 | 76 | 27 | 686 | 4 | 102 | 4 | 102 |
| WX-83-2*-1 | 42 3/8 | 1076 | 26 | 660 | 15 | 381 | 39 | 991 | 4 | 102 | 4 | 102 |
| WX-84-2*-1 | 54 3/8 | 1381 | 38 | 965 | 27 | 686 | 51 | 1295 | 4 | 102 | 4 | 102 |
| WX-85-2*-1 | 66 3/8 | 1686 | 50 | 1270 | 39 | 991 | 63 | 1600 | 4 | 102 | 4 | 102 |
| WX-86-2*-1 | 78 3/8 | 1991 | 62 | 1575 | 51 | 1295 | 75 | 1905 | 4 | 102 | 4 | 102 |
| WX-87-2*-1 | 90 3/8 | 2296 | 74 | 1880 | 63 | 1600 | 87 | 2210 | 4 | 102 | 4 | 102 |
| WX-88-2*-1 | 102 3/8 | 2600 | 86 | 2184 | 75 | 1905 | 99 | 2515 | 4 | 102 | 4 | 102 |
| WX-89-2*-1 | 114 3/8 | 2905 | 98 | 2489 | 87 | 2210 | 111 | 2819 | 4 | 102 | 4 | 102 |
| WX-810-2*-1 | 126 3/8 | 3210 | 110 | 2794 | 99 | 2515 | 123 | 3124 | 4 | 102 | 4 | 102 |
| WX-811-2*-1 | 138 3/8 | 3515 | 122 | 3099 | 111 | 2819 | 135 | 3429 | 4 | 102 | 4 | 102 |
| WX-812-2*-1 | 150 3/8 | 3820 | 134 | 3404 | 123 | 3124 | 147 | 3734 | 4 | 102 | 4 | 102 |
| WX-813-2*-1 | 162 3/8 | 4124 | 146 | 3708 | 135 | 3429 | 159 | 4039 | 4 | 102 | 4 | 102 |
| WX-814-2*-1 | 174 3/8 | 4429 | 158 | 4013 | 147 | 3734 | 171 | 4343 | 4 | 102 | 4 | 102 |

NOZZLE SCHEDULE

| SERVICE | MARK | SHELL SIDE | MARK | TUBE SIDE |
|---------|------|--------------|------|------------|
| INLET | N1 | AS PER TABLE | N5 | 3 (76) NPT |
| OUTLET | N2 | AS PER TABLE | N6 | 3 (76) NPT |
| DRAIN | N3 | 1/2 (13) NPT | | |
| VENT | N4 | 3/4 (19) NPT | | |

- NOTES:
1. SUPPORTS SUPPLIED ONLY IF SPECIFIED ON ORDER.
 2. NOZZLE SIZES SHOWN ARE RECOMMENDED FOR MAX EXCHANGER LIFE, NO EXTERNAL FORCES APPLY.
 3. FABRICATED TO ASME CODE SECTION VIII DIVISION 1 AND LATEST ADDENDA.
 4. DRAWING IS NOT TO SCALE.
 5. ALL DIMN'S ±1/8 (3) UNLESS OTHERWISE SHOWN.

DESIGN CONDITIONS

| | SHELL | | TUBES | |
|-------------------------|--------|--------|--------|--------|
| | PSIG | KPa | PSIG | KPa |
| DESIGN PRESSURE | 150 | 1034 | 150 | 1034 |
| DESIGN TEMPERATURE | 375 °F | 191 °C | 375 °F | 191 °C |
| MIN. DESIGN METAL TEMP. | 35 °F | 1.7 °C | 35 °F | 1.7 °C |
| HYDRO. TEST PRESSURE | 225 | 1551 | 300 | 2068 |
| CONTENTS | WATER | | WATER | |

CUSTOMER:
LOCATION:

ENGINEER:
ORDER No.:
PROJECT/JOB:
LOCATION:

TAG: (QUOTE #)

| | | | | | | |
|---|---|--|---------------------------------------|---|----------------------|------|
| TITLE: G.A. 150 LB. WX SERIES HEAT EXCHANGERS | A R M S T R O N G | | | | NUMBER: WX-8-2P-1(4) | REV. |
| DATE: 12/01/94 BY: D.G.R. | TORONTO - CANADA TEL: (416) 755-2291 | MONTREAL - CANADA TEL: (514) 421-2424 | BUFFALO - N.Y. TEL: (716) 693-8813 | COLCHESTER - U.K. TEL: (44) 120-657-9491 | | |