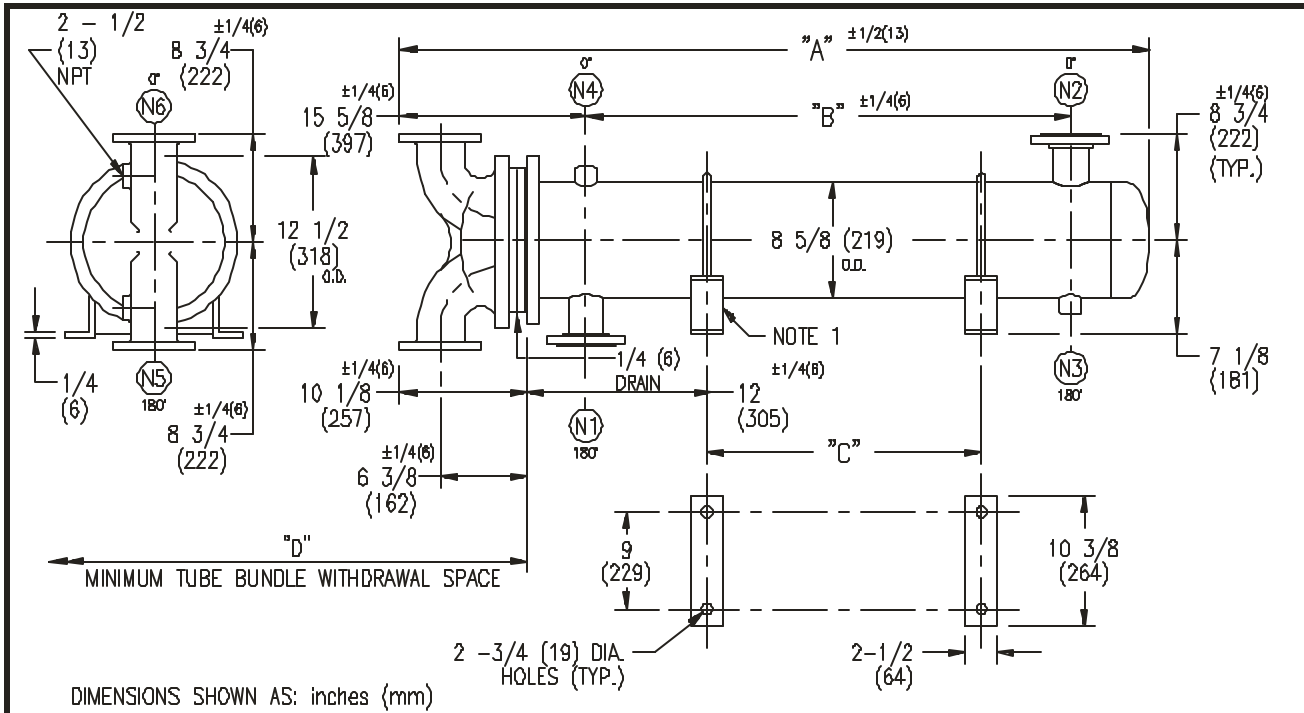


ARMSTRONG®



EXCHANGER SIZE *-BAFFLE SPACING	DIMENSIONS											
	A		B		C		D		N1		N2	
	inches	mm	inches	mm	inches	mm	inches	mm	inches	mm	inches	mm
WX-82-2*-2	35 7/8	911	14	356	3	76	27	686	4	102	4	102
WX-83-2*-2	47 7/8	1216	26	660	15	381	39	991	4	102	4	102
WX-84-2*-2	59 7/8	1521	38	965	27	686	51	1295	4	102	4	102
WX-85-2*-2	71 7/8	1826	50	1270	39	991	63	1600	4	102	4	102
WX-86-2*-2	83 7/8	2130	62	1575	51	1295	75	1905	4	102	4	102
WX-87-2*-2	95 7/8	2435	74	1880	63	1600	87	2210	4	102	4	102
WX-88-2*-2	107 7/8	2740	86	2184	75	1905	99	2515	4	102	4	102
WX-89-2*-2	119 7/8	3045	98	2489	87	2210	111	2819	4	102	4	102
WX-810-2*-2	131 7/8	3350	110	2794	99	2515	123	3124	4	102	4	102
WX-811-2*-2	143 7/8	3654	122	3099	111	2819	135	3429	4	102	4	102
WX-812-2*-2	155 7/8	3959	134	3404	123	3124	147	3734	4	102	4	102
WX-813-2*-2	167 7/8	4264	146	3708	135	3429	159	4039	4	102	4	102
WX-814-2*-2	179 7/8	4569	158	4013	147	3734	171	4343	4	102	4	102

NOZZLE SCHEDULE				
SERVICE	MARK	SHELL SIDE	MARK	TUBE SIDE
INLET	N1	AS PER TABLE	N5	3 (76) FLG
OUTLET	N2	AS PER TABLE	N6	3 (76) FLG
DRAIN	N3	1/2 (13) NPT		
VENT	N4	3/4 (19) NPT		

NOTES: 1. SUPPORTS SUPPLIED ONLY IF SPECIFIED ON ORDER.
 2. NOZZLE SIZES SHOWN ARE RECOMMENDED FOR MAX. EXCHANGER LIFE, NO EXTERNAL FORCES APPLY.
 3. FABRICATED TO ASME CODE SECTION VIII DIVISION 1 AND LATEST ADDENDA.
 4. DRAWING IS NOT TO SCALE.
 5. ALL DIM'S ±1/8 (3) UNLESS OTHERWISE SHOWN.

DESIGN CONDITIONS				
	SHELL		TUBES	
DESIGN PRESSURE	150 PSIG	1034 KPa	150 PSIG	1034 KPa
DESIGN TEMPERATURE	375 °F	191 °C	375 °F	191 °C
MIN DESIGN METAL TEMP.	35 °F	1.7 °C	35 °F	1.7 °C
HYDRO. TEST PRESSURE	225 PSIG	1561 KPa	300 PSIG	2068 KPa
CONTENTS	WATER		WATER	

CUSTOMER:
 LOCATION:
 ENGINEER:
 ORDER No.:
 PROJECT/JOB:
 LOCATION:
 TAG: (QUOTE #)

TITLE G.A. 150 LB WX SERIES HEAT EXCHANGERS	A R M S T R O N G				NUMBER WX-8-2P-2(4)	REV.
DATE 12/01/94 BY: D.C.R	TORONTO - CANADA TEL: (416) 755-2281	MONTREAL - CANADA TEL: (514) 421-2424	BUFFALO - N. Y. TEL: (716) 683-8813	COLCHESTER - U.K. TEL: (44) 120-657-8491		