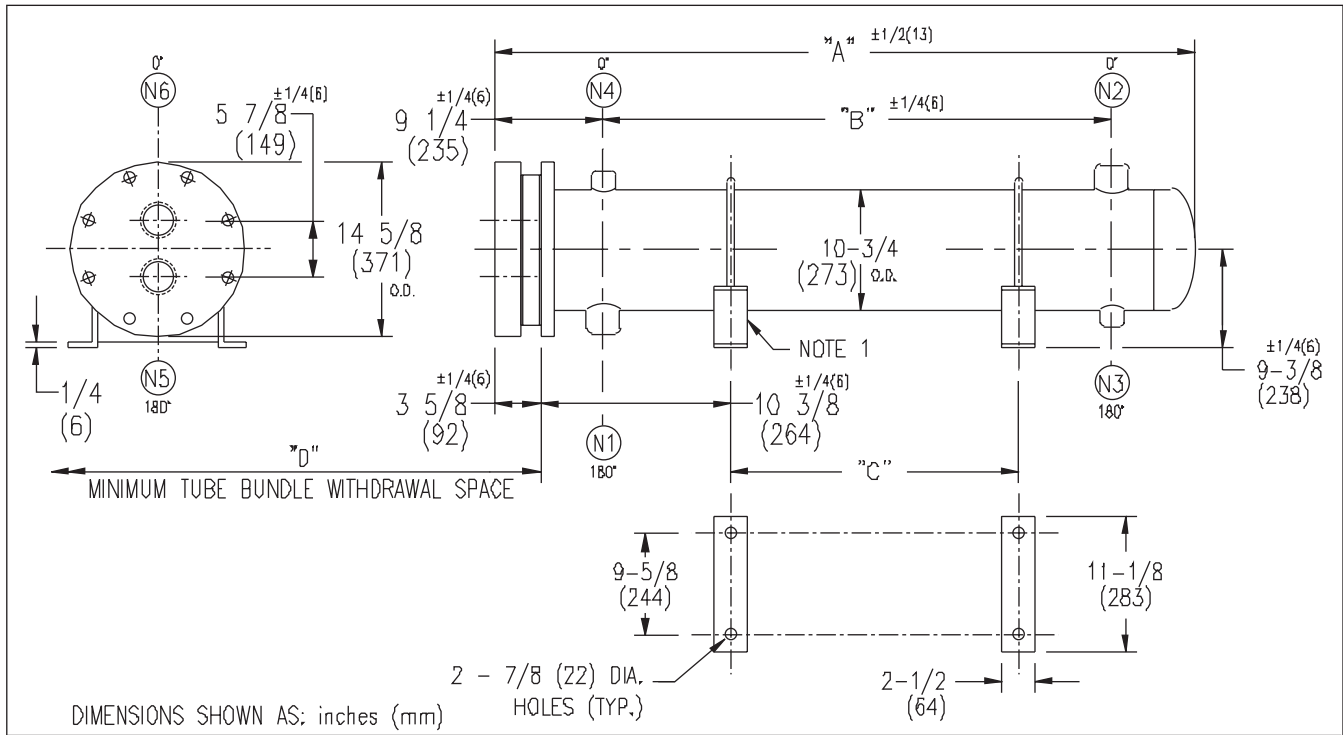


ARMSTRONG®



DIMENSIONS SHOWN AS: inches (mm)

EXCHANGER SIZE *BAFFLE SPACING	DIMENSIONS											
	A		B		C		D		N1		N2	
	inches	mm	inches	mm	inches	mm	inches	mm	inches	mm	inches	mm
W3H-102-2*-3	30	762	14	356	6 3/4	171	26	660	3	76	3	76
W3H-103-2*-3	42	1067	26	661	18 3/4	476	38	965	3	76	3	76
W3H-104-2*-3	54	1372	38	966	30 3/4	781	50	1270	3	76	3	76
W3H-105-2*-3	66	1676	50	1270	42 3/4	1085	62	1574	3	76	3	76
W3H-106-2*-3	78	1981	62	1575	54 3/4	1390	74	1879	3	76	3	76
W3H-107-2*-3	90	2286	74	1880	66 3/4	1695	86	2184	3	76	3	76
W3H-108-2*-3	102	2591	86	2185	78 3/4	2000	98	2489	3	76	3	76
W3H-109-2*-3	114	2896	98	2490	90 3/4	2305	110	2794	3	76	3	76
W3H-1010-2*-3	126	3200	110	2794	102 3/4	2609	122	3098	3	76	3	76
W3H-1011-2*-3	138	3505	122	3099	114 3/4	2914	134	3403	3	76	3	76
W3H-1012-2*-3	150	3810	134	3404	126 3/4	3219	146	3708	3	76	3	76
W3H-1013-2*-3	162	4115	146	3709	138 3/4	3524	158	4013	3	76	3	76
W3H-1014-2*-3	174	4420	158	4014	150 3/4	3829	170	4318	3	76	3	76
W3H-1015-2*-3	186	4724	170	4318	162 3/4	4134	182	4623	3	76	3	76

NOZZLE SCHEDULE

SERVICE	MARK	SHELL SIDE	MARK	TUBE SIDE
INLET	(N1)	AS PER TABLE	(N5)	3 (76) NPT
OUTLET	(N2)	AS PER TABLE	(N6)	3 (76) NPT
DRAIN	(N3)	1/2 (13) NPT		
VENT	(N4)	3/4 (19) NPT		

- NOTES: 1. SUPPORTS SUPPLIED ONLY IF SPECIFIED ON ORDER.
 2. NOZZLE SIZES SHOWN ARE RECOMMENDED FOR MAX. EXCHANGER LIFE, NO EXTERNAL FORCES APPLY.
 3. FABRICATED TO ASME CODE SECTION VIII DIVISION 1 AND LATEST ADDENDA.
 4. DRAWING IS NOT TO SCALE.
 5. ALL DIM'S ±1/8 (3) UNLESS OTHERWISE SHOWN.

DESIGN CONDITIONS

	SHELL		TUBES	
DESIGN PRESSURE	300 PSIG	2068 KPa	300 PSIG	2068 KPa
DESIGN TEMPERATURE	375 °F	191 °C	375 °F	191 °C
MIN. DESIGN METAL TEMP.	35 °F	1.7 °C	35 °F	1.7 °C
HYDRO. TEST PRESSURE	450 PSIG	3102 KPa	450 PSIG	3102 KPa
CONTENTS	WATER		WATER	

CUSTOMER:

LOCATION:

ENGINEER:

ORDER No.:

PROJECT/JOB:

LOCATION:

TAG:

(QUOTE #)

TITLE G.A. 300 LB. W SERIES HEAT EXCHANGERS	A R M S T R O N G				NUMBER W3H-10-2P-3(3)	REV.
DATE: 03 / 05 / 01 BY: J.R.	TORONTO - CANADA TEL : (416) 755-2291	MONTREAL - CANADA TEL : (514) 421-2424	BUFFALO - N. Y. TEL: (716) 693-8813	DOLCHESTER - U.K. TEL: (44) 120-657-9491		