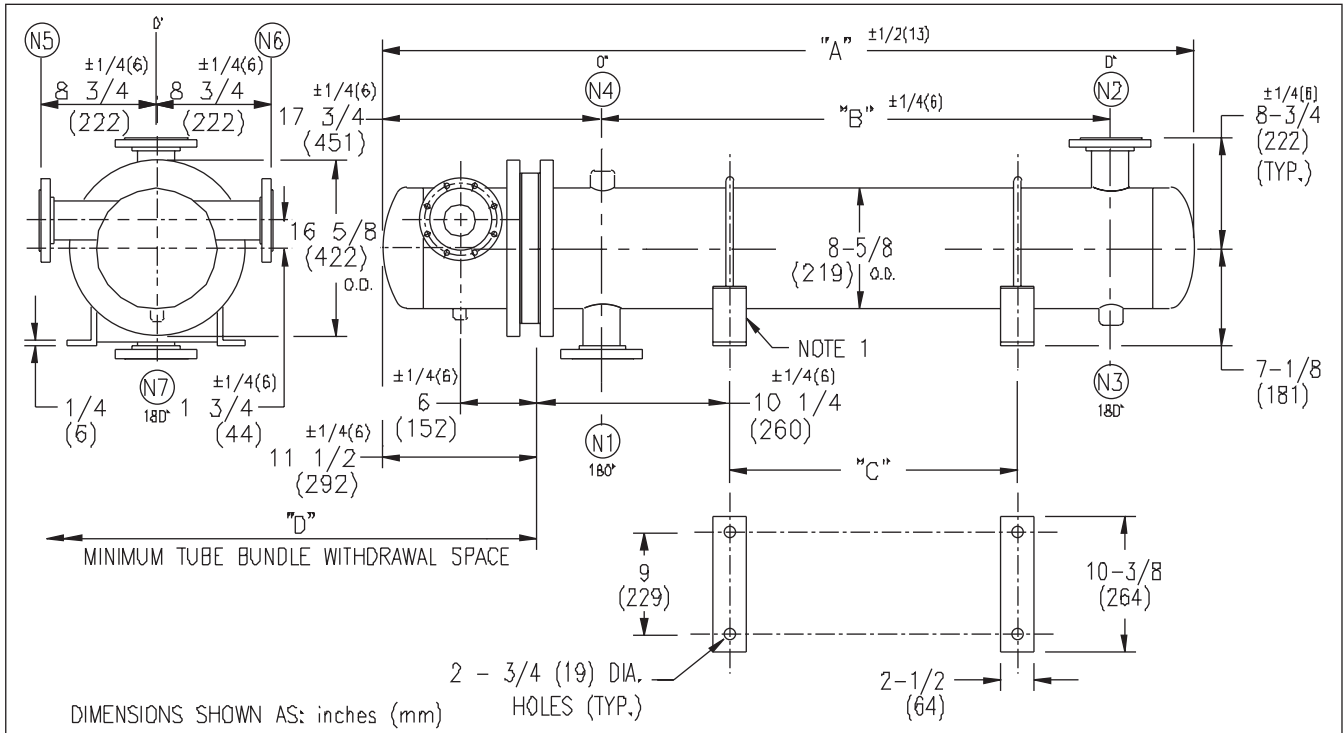


ARMSTRONG®



EXCHANGER SIZE *-BAFFLE SPACING	DIMENSIONS											
	A		B		C		D		N1		N2	
	inches	mm	inches	mm	inches	mm	inches	mm	inches	mm	inches	mm
W3H-82-4*-4	37 1/4	946	13	330	2 3/4	70	26	660	4	102	4	102
W3H-83-4*-4	49 1/4	1251	25	635	14 3/4	375	38	965	4	102	4	102
W3H-84-4*-4	61 1/4	1556	37	940	26 3/4	679	50	1270	4	102	4	102
W3H-85-4*-4	73 1/4	1861	49	1245	38 3/4	940	62	1574	4	102	4	102
W3H-86-4*-4	85 1/4	2165	61	1549	50 3/4	1289	74	1879	4	102	4	102
W3H-87-4*-4	97 1/4	2470	73	1854	62 3/4	1594	86	2184	4	102	4	102
W3H-88-4*-4	109 1/4	2775	85	2159	74 3/4	1899	98	2489	4	102	4	102
W3H-89-4*-4	121 1/4	3080	97	2464	86 3/4	2203	110	2794	4	102	4	102
W3H-810-4*-4	133 1/4	3385	109	2769	98 3/4	2508	122	3098	4	102	4	102
W3H-811-4*-4	145 1/4	3689	121	3073	110 3/4	2813	134	3403	4	102	4	102
W3H-812-4*-4	157 1/4	3994	133	3378	122 3/4	3118	146	3708	4	102	4	102
W3H-813-4*-4	169 1/4	4299	145	3683	134 3/4	3423	158	4013	4	102	4	102
W3H-814-4*-4	181 1/4	4604	157	3989	146 3/4	3727	170	4318	4	102	4	102

NOZZLE SCHEDULE				
SERVICE	MARK	SHELL SIDE	MARK	TUBE SIDE
INLET	N1	AS PER TABLE	N5	2 (51) 300# FLG.
OUTLET	N2	AS PER TABLE	N6	2 (51) 300# FLG.
DRAIN	N3	1/2 (13) NPT	N7	1/2 (13) NPT
VENT	N4	3/4 (19) NPT		

- NOTES: 1. SUPPORTS SUPPLIED ONLY IF SPECIFIED ON ORDER.
 2. NOZZLE SIZES SHOWN ARE RECOMMENDED FOR MAX. EXCHANGER LIFE, NO EXTERNAL APPLY.
 3. FABRICATED TO ASME CODE SECTION VIII DIVISION 1 AND LATEST ADDENDA.
 4. DRAWING IS NOT TO SCALE.
 5. ALL DIM'S ±1/8 (3) UNLESS OTHERWISE SHOWN.

DESIGN CONDITIONS				
	SHELL		TUBES	
DESIGN PRESSURE	300 PSIG	2068 KP _a	300 PSIG	2068 KP _a
DESIGN TEMPERATURE	375 °F	191 °C	375 °F	191 °C
MIN. DESIGN METAL TEMP.	35 °F	1.7 °C	35 °F	1.7 °C
HYDRO. TEST PRESSURE	450 PSIG	3102 KP _a	450 PSIG	3102 KP _a
CONTENTS	WATER		WATER	

CUSTOMER: _____
 LOCATION: _____
 ENGINEER: _____
 ORDER No.: _____
 PROJECT/JOB: _____
 LOCATION: _____
 TAG: _____ (QUOTE # _____)

TITLE G.A. 300 LB. W SERIES HEAT EXCHANGERS	A R M S T R O N G				NUMBER W3H-8-4P-4(4)	REV.
DATE: 02 / 01 / 01 BY: J.R.	TORONTO - CANADA TEL : (416) 755-2291	MONTREAL - CANADA TEL : (514) 421-2424	BUFFALO - N. Y. TEL: (716) 693-8813	COLCHESTER - U.K. TEL: (44) 120-657-9491		