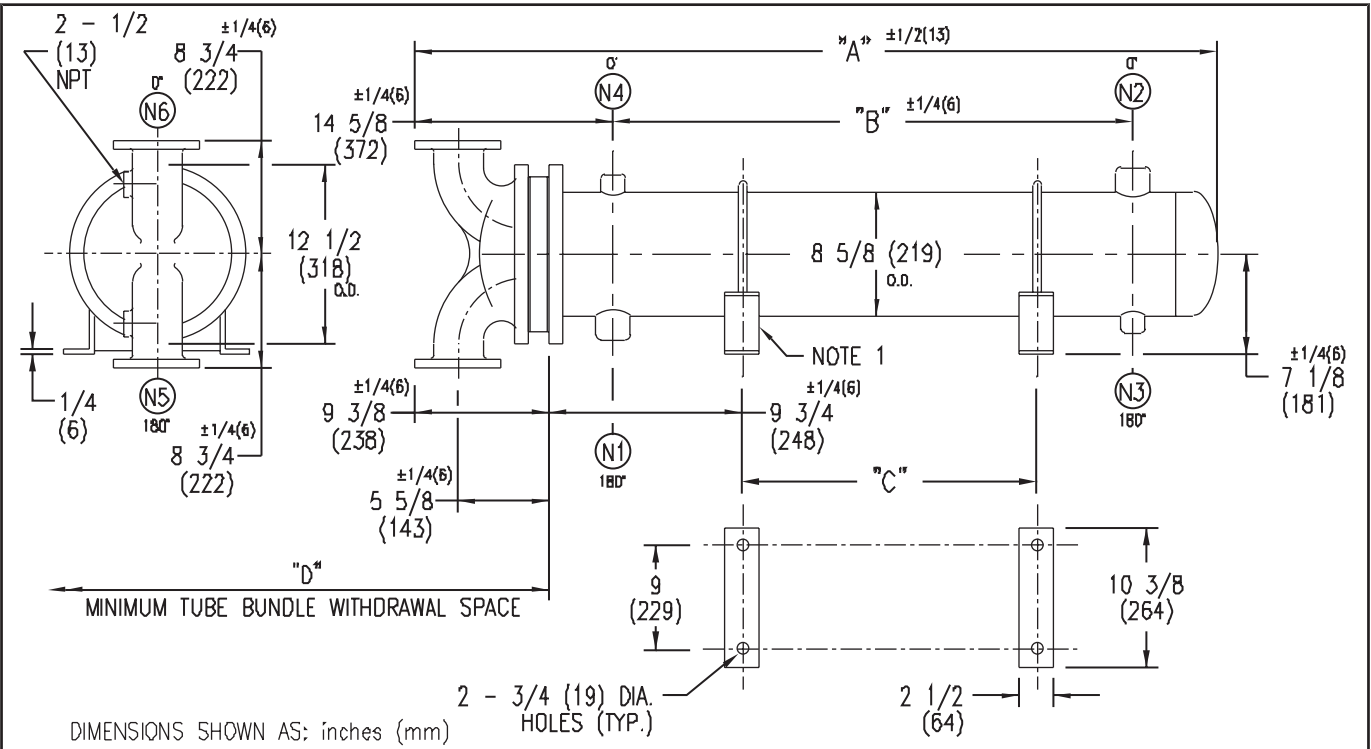


ARMSTRONG®



EXCHANGER SIZE *—BAFFLE SPACING	DIMENSIONS											
	A		B		C		D		N1		N2	
	inches	mm	inches	mm	inches	mm	inches	mm	inches	mm	inches	mm
W-82-2*-2	35 1/8	892	14 1/2	368	6	152	26	660	3	76	3	76
W-83-2*-2	47 1/8	1197	26 1/2	673	18	457	38	965	3	76	3	76
W-84-2*-2	59 1/8	1502	38 1/2	978	30	762	50	1270	3	76	3	76
W-85-2*-2	71 1/8	1807	50 1/2	1283	42	1067	62	1575	3	76	3	76
W-86-2*-2	83 1/8	2111	62 1/2	1588	54	1372	74	1880	3	76	3	76
W-87-2*-2	95 1/8	2416	74 1/2	1892	66	1676	86	2184	3	76	3	76
W-88-2*-2	107 1/8	2721	86 1/2	2197	78	1981	98	2489	3	76	3	76
W-89-2*-2	119 1/8	3026	98 1/2	2502	90	2286	110	2794	3	76	3	76
W-810-2*-2	131 1/8	3331	110 1/2	2807	102	2591	122	3099	3	76	3	76
W-811-2*-2	143 1/8	3635	122 1/2	3112	114	2896	134	3404	3	76	3	76
W-812-2*-2	155 1/8	3940	134 1/2	3416	126	3200	146	3708	3	76	3	76
W-813-2*-2	167 1/8	4245	146 1/2	3721	138	3505	158	4013	3	76	3	76
W-814-2*-2	179 1/8	4550	158 1/2	4026	150	3810	170	4318	3	76	3	76

NOZZLE SCHEDULE				
SERVICE	MARK	SHELL SIDE	MARK	TUBE SIDE
INLET	N1	AS PER TABLE	N5	3 (76) FLG
OUTLET	N2	AS PER TABLE	N6	3 (76) FLG
DRAIN	N3	1/2 (13) NPT		
VENT	N4	3/4 (19) NPT		

NOTES: 1. SUPPORTS SUPPLIED ONLY IF SPECIFIED ON ORDER.
 2. NOZZLE SIZES SHOWN ARE RECOMMENDED FOR MAX. EXCHANGER LIFE, NO EXTERNAL FORCES APPLY.
 3. FABRICATED TO ASME CODE SECTION VIII DIVISION 1 AND LATEST ADDENDA.
 4. DRAWING IS NOT TO SCALE.
 5. ALL DIMN'S ±1/8 (3) UNLESS OTHERWISE SHOWN.

DESIGN CONDITIONS				
	SHELL		TUBES	
DESIGN PRESSURE	150 PSIG	1034 KPa	150 PSIG	1034 KPa
DESIGN TEMPERATURE	375 °F	191 °C	375 °F	191 °C
MIN. DESIGN METAL TEMP.	35 °F	1.7 °C	35 °F	1.7 °C
HYDRO. TEST PRESSURE	225 PSIG	1551 KPa	300 PSIG	2068 KPa
CONTENTS	WATER		WATER	

CUSTOMER: _____
 LOCATION: _____
 ENGINEER: _____
 ORDER No.: _____
 PROJECT/JOB: _____
 LOCATION: _____
 TAG: _____ (QUOTE # _____)

TITLE G.A. 150 LB. W SERIES HEAT EXCHANGERS	A R M S T R O N G				NUMBER W-8-2P-2-(3)	REV. A 2001 J.R.
DATE: 12/01/94 BY: D.C.R.	TORONTO - CANADA TEL: (416) 755-2291	MONTREAL - CANADA TEL: (514) 421-2424	BUFFALO - N. Y. TEL: (716) 693-8813	COLCHESTER - U.K. TEL: (44) 120-657-9491		