

SUCTION GUIDES - MODEL SG – ANSI 150 FLANGED Sizes 14" – 20"

SUBMITTAL

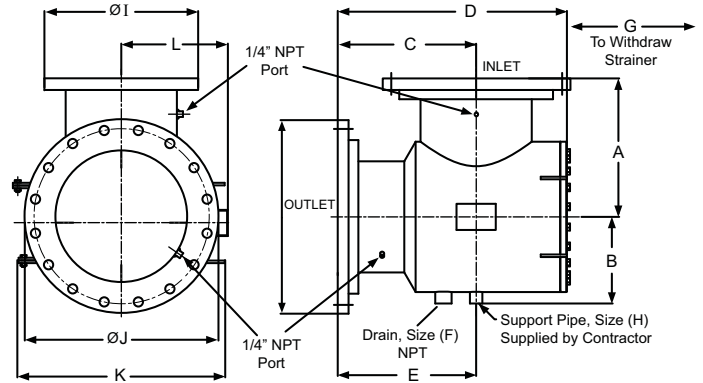
JOB: _____	REPRESENTATIVE: _____
_____	ORDER NO: _____ DATE: _____
ENGINEER: _____	SUBMITTED BY: _____ DATE: _____
CONTRACTOR: _____	APPROVED BY: _____ DATE: _____

MODEL NUMBER	CONNECTION SIZES ANSI 150 FLANGED		QUANTITY REQUIRED	IDENTIFICATION
	INLET FROM SYSTEM	OUTLET TO PUMP		

MATERIALS OF CONSTRUCTION	
Body	Carbon Steel
Strainer	Stainless Steel, 0.125" (3mm) Perf.
Start-Up Strainer (remove after 24 hours)	Fine Mesh Galvanized Steel
Guide Vanes	Carbon Steel
Cover Plate	Carbon Steel
Cover Gasket	Synthetic Fiber

MAXIMUM WORKING PRESSURE:	175 psig (12 bars)
MAXIMUM OPERATING TEMPERATURE:	300°F (150°C)

OPTIONS:



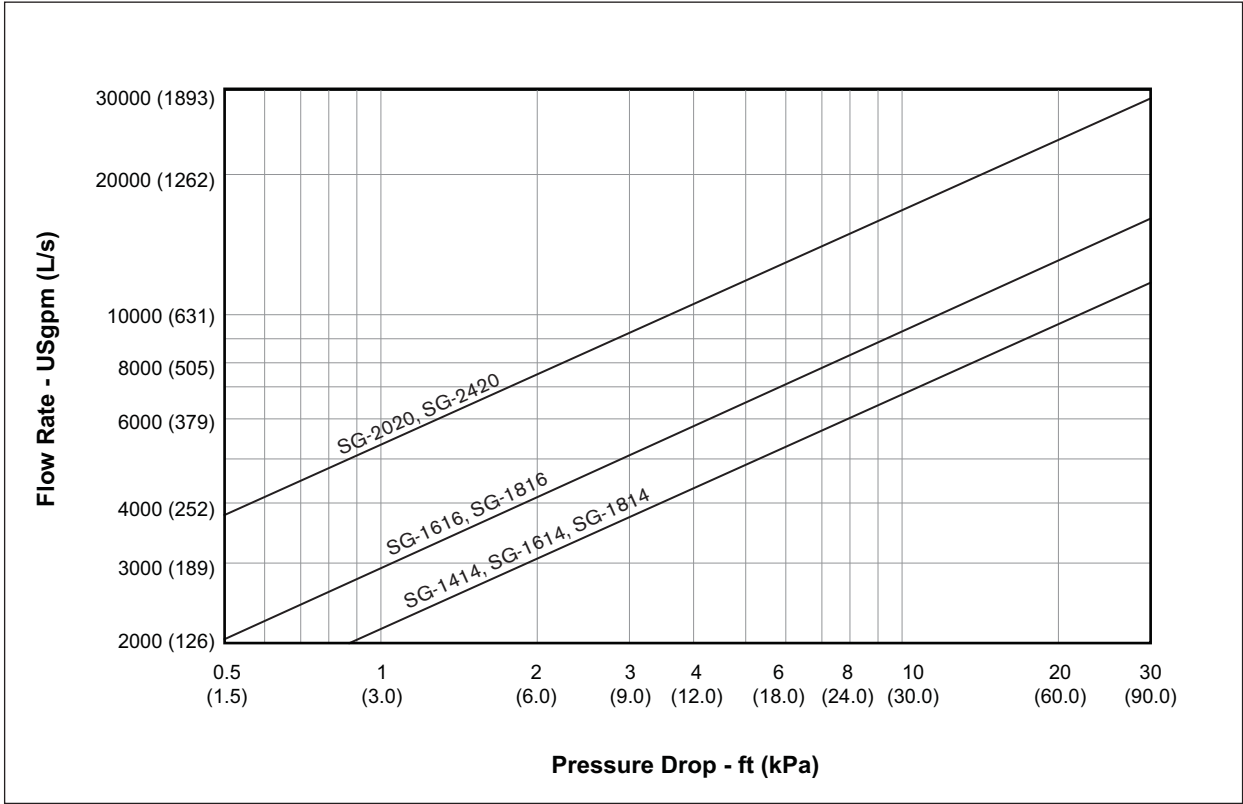
Reversible hinged cover supplied as standard.

DIMENSIONAL DATA SG

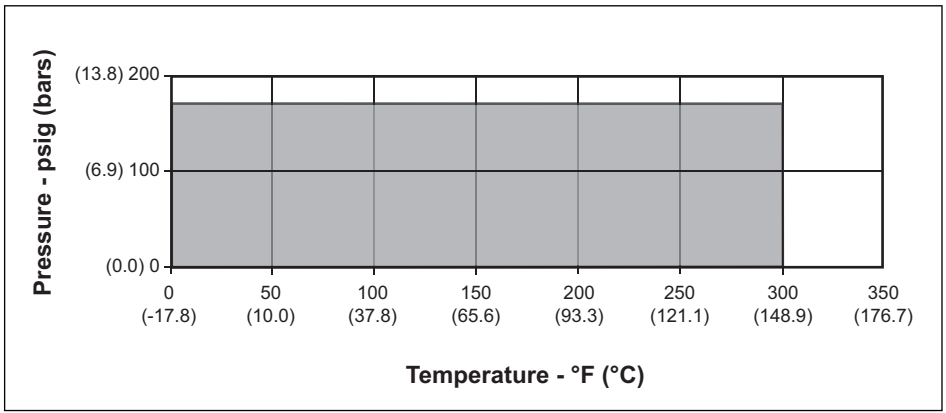
MODEL	Connection Size		Strainer Free Area In ² (cm ²)	DIMENSIONS in Inches (mm)												Weight lbs (kg)
	System	Pump		A	B	C	D	E	F	G	H	I	J	K	L	
SG-1414	14.00 (350)	14.00 (350)	617 (3981)	16.50 (419)	11.69 (297)	18.38 (467)	31.88 (810)	18.38 (467)	1.50 (38)	25.50 (648)	2.00 (50)	21.00 (533)	21.00 (533)	22.75 (578)	11.69 (297)	600 (272.7)
SG-1614	16.00 (400)	14.00 (350)	617 (3981)	16.50 (419)	11.69 (297)	18.50 (470)	31.88 (810)	18.50 (470)	1.50 (38)	25.50 (648)	2.00 (50)	23.50 (597)	21.00 (533)	22.75 (578)	11.69 (297)	625 (284.1)
SG-1814	18.00 (450)	14.00 (350)	617 (3981)	17.69 (449)	11.69 (297)	19.25 (489)	31.88 (810)	19.25 (489)	1.50 (38)	25.50 (648)	2.00 (50)	25.00 (635)	21.00 (533)	23.75 (603)	11.69 (297)	690 (313.6)
SG-1616	16.00 (400)	16.00 (400)	777 (5013)	19.50 (495)	13.25 (337)	19.50 (495)	33.38 (848)	19.50 (495)	1.50 (38)	27.00 (686)	2.00 (50)	23.50 (597)	23.50 (597)	25.38 (645)	13.19 (335)	790 (359.1)
SG-1816	18.00 (450)	16.00 (400)	777 (5013)	19.50 (495)	13.25 (337)	19.81 (503)	33.38 (848)	19.81 (503)	1.50 (38)	27.00 (686)	2.00 (50)	25.00 (635)	23.50 (597)	25.38 (645)	13.19 (335)	830 (377.3)
SG-2020	20.00 (500)	20.00 (500)	1298 (8374)	22.50 (572)	15.50 (394)	23.50 (597)	41.75 (1060)	23.50 (597)	2.00 (50)	34.00 (864)	2.00 (50)	27.50 (699)	27.50 (699)	29.50 (749)	15.44 (392)	1310 (595.4)
SG-2420	24.00 (600)	20.00 (500)	1298 (8374)	23.13 (587)	15.50 (394)	24.50 (622)	41.75 (1060)	24.50 (622)	2.00 (50)	34.00 (864)	2.00 (50)	32.00 (813)	27.50 (699)	29.50 (749)	15.44 (392)	1410 (640.9)

Dimensions and weights are for reference only. Please allow +/- 0.25" (6mm) dimensional tolerance. Contact the factory for certified dimension prints.

Flow Rate / Pressure Drop Chart



Pressure / Temperature Chart



S. A. Armstrong Limited
 23 Bertrand Avenue
 Toronto, Ontario
 Canada, M1L 2P3
 T: (416) 755-2291
 F (Main): (416) 759-9101

Armstrong Pumps Inc.
 93 East Avenue
 North Tonawanda, New York
 U.S.A. 14120-6594
 T: (716) 693-8813
 F: (716) 693-8970

Armstrong Integrated Limited
 Wenlock Way
 Manchester
 United Kingdom, M12 5JL
 T: +44 (0) 8444 145 145
 F: +44 (0) 8444 145 146

