



SERIES 5400
Simplex Arrangement
 Sewage Pumps

FILE NO.:	50.92
DATE:	MAY 15, 1996
SUPERSEDES:	5050.92
DATE:	MAY 6, 1985

SUBMITTAL

Job: _____	Representative: _____
_____	_____
_____	_____
Engineer: _____	Order No: _____ Date: _____
Contractor: _____	Submitted by: _____ Date: _____
	Approved by: _____ Date: _____

PUMP DESIGN DATA			
PUMP SIZE:			
CAPACITY:	USGPM	HEAD:	FT.
LIQUID:		SPECIFIC GRAVITY:	
TEMPERATURE:	°F	SOLID SIZE:	

MOTOR DESIGN DATA			
HP:		RPM:	
FRAME SIZE:		Enclosure:	
VOLTS:	HERTZ	PHASE	

SUMP DESIGN DATA	
INSIDE DIMENSIONS:	
SUMP DEPTH:	INCHES

REMARKS	
DIMENSIONS:	<i>See Reverse Side</i>
PERFORMANCE:	<i>See Reverse Side</i>
CONTROLS & ACCESSORIES:	<i>See Separate Submittal & Wiring Diagram</i>

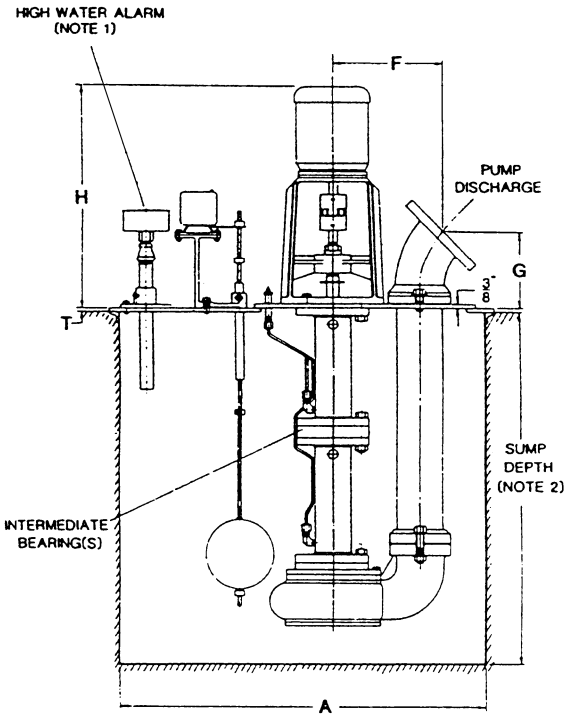
SUMP ACCESSORIES		
DESCRIPTION	DRAWING NO.	CHECK IF SUPPLIED BY ARMSTRONG
CURB FRAME		
COVER PLATE		
SUMP BASIN		

SUMP DESIGN DATA	
<p>A standard simplex unit comprises one pump of the vertical, shaft driven single stage, centrifugal type with cast iron casing, cast iron impeller, bronze guide bearings, ball thrust bearing, grease lubrication, alloy steel shaft, cast iron motor support and steel floor plate. The pump is directly connected to a vertical, solid shaft ball bearing driven motor.</p>	
<p>Special features furnished on this order only are checked below:</p>	
Stainless Steel Shafts	_____
Bronze Impellers	_____
Graphite Bearing With Internal Lubrication	_____
Oil Lubrication	_____
Cutless Rubber Lower Bearing	_____

ARMSTRONG

DIMENSIONAL DATA

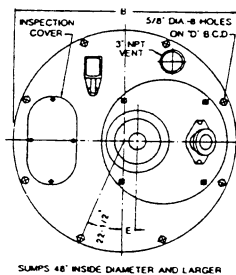
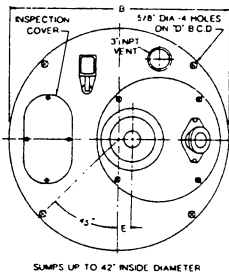
For Exact Installation Data, Please Write Factory
For Certified Dimensions



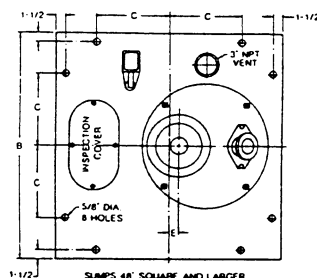
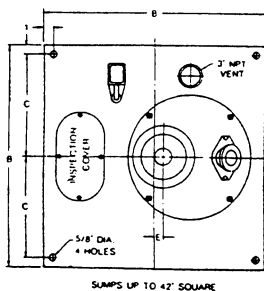
SUMP				E				INSPECTION
A	B	C	D	3D	4D	4E	T	COVER SIZE
30" DIA	34	-	32	4	2.75	2.75	.375	10.5 x 13
36" DIA	40	-	38	6	4.75	4.75	.375	14 x 20
42" DIA	46	-	44	9	7.75	7.75	.5	14 x 20
48" DIA	54	-	51	9	7.75	7.75	.5	14 x 20
54" DIA	60	-	57	9	7.75	7.75	.625	14 x 20
60" DIA	66	-	63	9	7.75	7.75	.625	14 x 20
72" DIA	78	-	75	9	7.75	7.75	.75	14 x 20
24" SQUARE	28	13	-	1	.25	.25*	.375	N/A
30" SQUARE	34	16	-	4	2.75	2.75	.375	10.5 x 13
36" SQUARE	40	19	-	6	4.75	4.75	.375	14 x 20
42" SQUARE	46	22	-	9	7.75	7.75	.5	14 x 20
48" SQUARE	54	14.5	-	9	7.75	7.75	.5	14 x 20
54" SQUARE	60	16	-	9	7.75	7.75	.625	14 x 20
60" SQUARE	66	19	-	9	7.75	7.75	.625	14 x 20
72" SQUARE	78	23	-	9	7.75	7.75	.75	14 x 20

Denotes negative dimension

PUMP	F	G	PUMP DISCHARGE
3D	9	3.75	Screwed 3" NPT
4D	10.875	7.25	Flanged 4" 125# ASA
4E	11.875	7.25	Flanged 4" 125# ASA



SUMP DEPTH IN FEET	NUMBER OF INTERMEDIATE BEARINGS
UP TO 4'-6"	0
5' TO 8'	1
9' TO 12'	2



MOTOR FRAME SIZE	56	143	145	182	184	213	215	254	256
HEIGHT APPROX.	21.5	22	22	22.75	24.5	26.25	27.75	28.75	30.75

Note 1. High water alarm furnished only where specified.
Note 2. Sump depth specified on reverse side.

S.A. Armstrong Limited
23 Bertrand Avenue
Toronto, Ontario
Canada, M1L 2P3
Tel: (416) 755-2291
Fax: (416) 755-9101

Armstrong Pumps Limited
Peartree Road, Stanway
Colchester, Essex
United Kingdom, C03 5JX
Tel: 01206-579491
Fax: 01206-760532



Armstrong Pumps Inc.
93 East Avenue
Buffalo, New York
U.S.A. 14120-6594
Tel: (716) 693-8813
Fax: (716) 693-8970
1-800-FLOW-845

Armstrong Darling Inc.
2200 Place Transcanadienne
Montreal, Quebec
Canada, H9P 2X5
Tel: (514) 421-2424
Fax: (514) 421-2436